

*Susan Reeves, Chairperson
Charity McDaniels, Co Chairperson
Edith Jackson, Planning Commission Member
New Member, Planning Commission Member
Jack Murray, Planning Commission Member
Richard Taylor, Planning Commission Member
Benny Moore, Planning Commission Member
Todd Day, Town Manager*

TOWN OF TAZEWELL, VIRGINIA
Planning Commission Meeting
Monday, November 7, 2016
7:00 p.m.
Town of Tazewell Council Chambers

❖ **Call to Order by Planning Commission Chairman**

1. Pledge of Allegiance
2. Invocation
3. Approval of Minutes
[Planning Commission Meeting of October 3 ,2016]
4. Deliqent Tax Ordinance/ R-2 District Area (Chris)
5. Street Names & Addressing (Chris)
6. Boundary Adjustments (David)
7. Adjournment

**Planning Commission Meeting Minutes
October 3, 2016**

The Tazewell Planning Commission met at 7:00 p.m. in the Town Hall Council Chambers.

Present:

Planning Commission Chair Susan Reeves
Planning Commission Vice Chair Charity McDaniel
Planning Commission Member Edith Jackson
Planning Commission Member Benny Moore
Planning Commission Member Jack Murray
Planning Commission Member Richard Taylor

Absent:

Town Manager Todd Day (nonvoting member)

Staff present was Town Attorney Brad Pyott; Town Clerk Leeanne Billings; Zoning, Property & Maintenance Official Chris Hurley, Accounting Clerk David Hilton.

CALL TO ORDER

Chairman Reeves called the meeting to order and lead the pledge of allegiance. Planning Commission Member Jackson gave the invocation.

APPROVAL OF MINUTES

Motion to approve minutes was made by Planning Commission Member Murray, seconded by Planning Commission Member Taylor to approve the September 12, 2016 meeting minutes. On vote: Planning Commission Member Murray, aye; Planning Commission Member Taylor, aye; Planning Commission Vice Chair McDaniel, aye; Planning Commission Member Jackson, aye; Planning Commission Member Moore, aye.

416 TAZEWELL AVNENUE/OAK LANE

Zoning, Property & Maintenance Official Chris Hurley stated that Judy Boothe would like to put a garage behind her house. The current zoning is R2 and it must be 60 feet from the center line of the property. It does not meet that guideline requirement. Planning Commission Member Moore stated that this was going to be a Board of Zoning Appeals issue. Town Attorney Pyott stated that Mrs. Boothe would need to apply for a zoning permit and Zoning, Property & Maintenance Official Chris Hurley would need to deny it since it does not meet the setbacks. She can then appeal it to the BZA.

STREET NAMES & ADDRESSING

Rogers Drive & Ashwood Drive

Zoning, Property & Maintenance Official Chris Hurley stated that the area around Dogwood Apartments and Hill Side Apartments was set to be renamed Rogers Street. This has now been changed to Rogers Drive. The second street there will be named Ashwood Drive. Motion was made by Planning Commission Member Moore to accept these street names. Motion was seconded by Planning Commission Member Murray. On vote: Planning Commission Member Murray, aye; Planning Commission Member Taylor, aye; Planning Commission Vice Chair McDaniel, aye; Planning Commission Member Jackson, aye; Planning Commission Member Moore, aye.

Henry Street & Kingston Street

At the last meeting it was decided on that part of Henry Street would now become Windsor Street. However, there is already a Windsor Street in North Tazewell. It was suggested that the name of the street could be West Brook Street, Hartford Street, or Kingston Street. Motion was made by Planning Commission Member Murray to accept Kingston Street to be named on the other portion of Henry Street. Motion was seconded by Planning Commission Member Moore. On vote: Planning Commission Member Murray, aye; Planning Commission Member Taylor, aye; Planning Commission Vice Chair McDaniel, aye; Planning Commission Member Jackson, aye; Planning Commission Member Moore, aye.

Field Crest Circle

It has come to our attention that the road going around the Tazewell County Fairgrounds needs to be named. Motion was made by Planning Commission Member Moore to name it Field Crest Circle. Motion was seconded by Planning Commission Member Murray. On vote: Planning Commission Member Murray, aye; Planning Commission Member Taylor, aye; Planning Commission Vice Chair McDaniel, aye; Planning Commission Member Jackson, aye; Planning Commission Member Moore, aye.

Deer Ridge Trail

It has come to our attention that there is a Deer Run Street in the Gratton area. Motion was made by Planning Commission Member Moore to change Deer Run Lane to Deer Ridge Trail. Motion was seconded by Planning Commission Member Murray. On vote: Planning Commission Member Murray, aye; Planning Commission Member Taylor, aye; Planning Commission Vice Chair McDaniel, aye; Planning Commission Member Jackson, aye; Planning Commission Member Moore, aye.

Fairview Street & Orchard Street

It was discussed that Orchard Street is a straight road however it has two names, Orchard Street on one end and Fairview Street at the other end. Motion was made by Vice Chair McDaniel to make the street Orchard Street all the way down. Motion was seconded by Planning Commission Member Murray. On vote: Planning Commission Member Murray, aye; Planning Commission Member Taylor, aye; Planning Commission Vice Chair McDaniel, aye; Planning Commission Member Jackson, aye; Planning Commission Member Moore, aye.

BOUNDARY ADJUSTMENT

Accounting Clerk, David Hilton has prepared a cost study analysis and revenue analysis. He has broken it down by streets to show revenue if we did a boundary adjustment. He gave an expense study at a previous meeting.

We have received a request from Larry Blankenship on behalf of the Tazewell Baseball Boosters stating that they would like to have a nine acre tract redistricted (boundary adjustment) so the property would connect. The property is located around Tazewell Middle School and Dunford Park. Planning Commission Member Murray made a motion to not take this issue to the Town Council. After discussion was held, he rescinded his motion. He now would like to table the issue to the next meeting providing we get a cost versus expense on property sections.

At a previous meeting it was discussed whether or not to number houses by the front of the house or the driveways. An exhibit for address numbering protocols was given to the committee to review. The house numbers will be determined by the road the front door faces. Motion was made by Planning Commission Member Murray to adopt this Exhibit and direct it to the Town Council to amend the Street Naming Ordinance. Motion was seconded by Vice Chair McDaniel. On vote: Planning Commission Member Murray, aye; Planning Commission Member Taylor, aye; Planning Commission Vice Chair McDaniel, aye; Planning Commission Member Jackson, aye; Planning Commission Member Moore, aye.

DEER RUN ROAD DEDICATION

Attorney Pyott and Offical Hurley discussed the plats of Deer Run Lane. Council will need to get dedication from Mr. Smith and Mr. Absher along Deer Run lane, which earlier in this meeting was changed to Deer Field Trail.

ADOJURNMENT

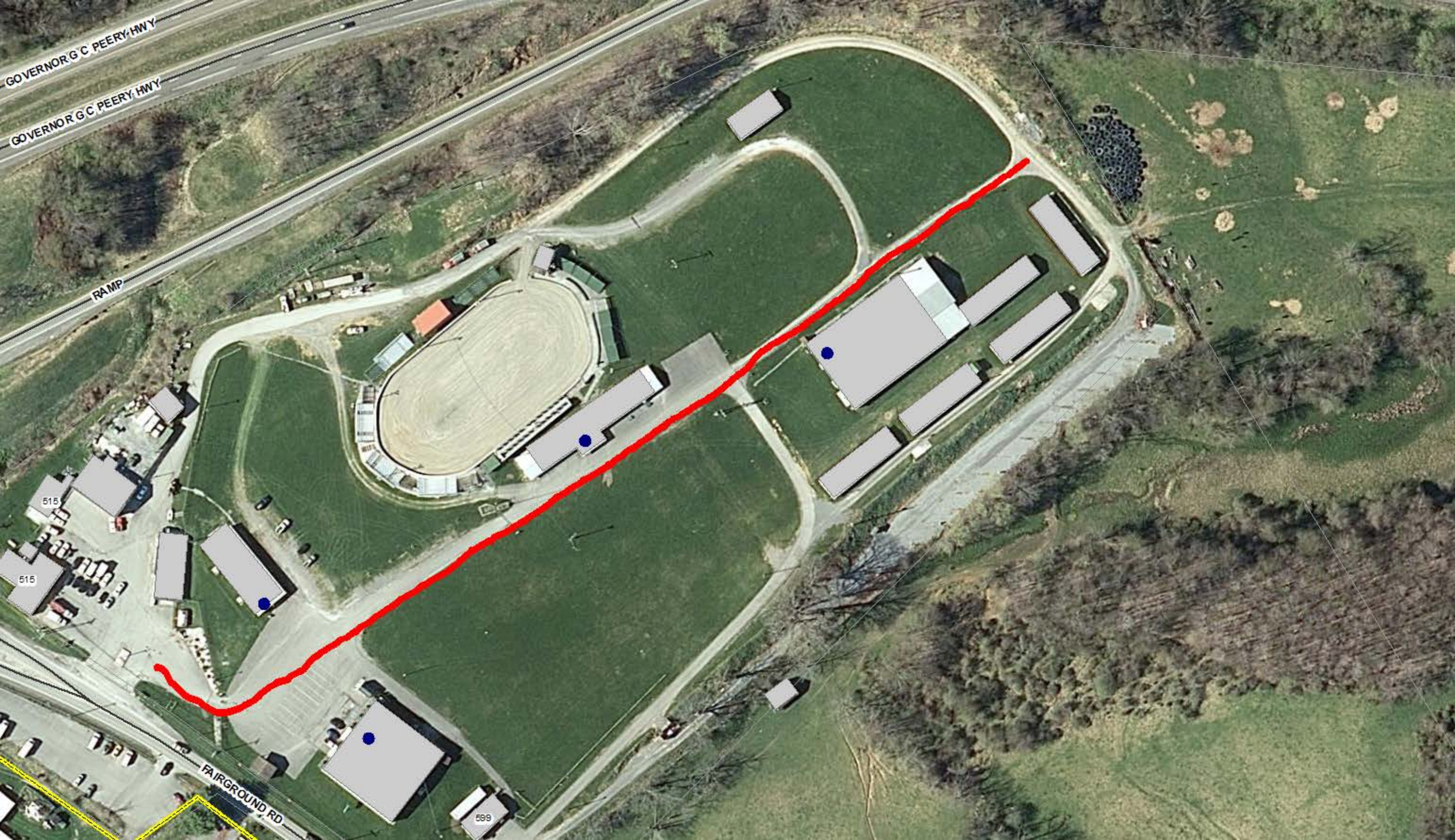
Planning Commission Member Murray made a motion to adjourn the meeting. The motion was seconded by Planning Commission Member Moore. On vote: Planning Commission Member Murray, aye; Planning Commission Member Taylor, aye; Planning Commission Vice Chair McDaniel, aye; Planning Commission Member Jackson, aye; Planning Commission Member Moore, aye.

The meeting adjourned at 8:03 pm.

ADJUSTMENT AREA	TOTAL ONE-TIME EXPENSES	TOTAL YEARLY REVENUE	TOTAL NUMER OF YEARS TO RECOOP COSTS
Peakwood Area	\$ 218,909.01	\$ 36,573.39	6
Pisgah Area	\$ 6,000.00	\$ 11,237.71	1
Adria/North Tazewell	\$ 395,766.00	\$ 45,810.06	9
Blacks Chapel Area	\$ 10,000.00	\$ 10,556.78	1
Dialrock Area	\$ 177,254.00	\$ 39,446.35	5
County Farm Area	\$ 108,538.80	\$ 13,016.78	9
Gratton Area	\$ 367,179.88	\$ 62,427.10	6

EXPENSES: Water, Sewer, Fire, and other utilities.

Revenue: Personal Property Tax Revenue, & VDOT Revenue



GOVERNOR G C PEERY HWY

GOVERNOR G C PEERY HWY

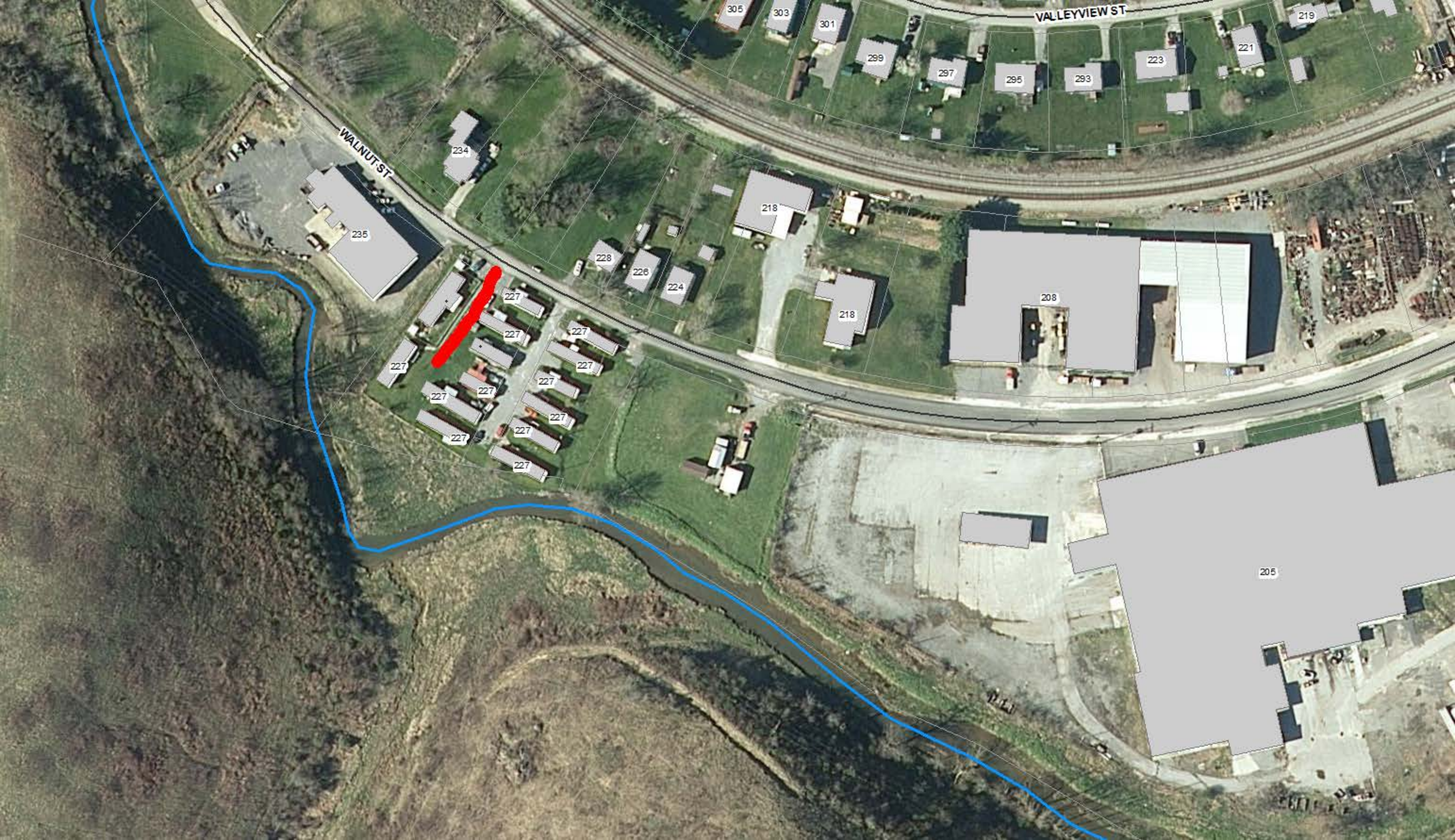
RAMP

515

515

FAIRGROUND RD

599



WALNUT ST

VALLEYVIEW ST

235

234

227

227

227

227

227

227

227

227

227

227

227

227

227

227

227

227

228

228

224

218

218

208

205

219

221

223

293

295

297

299

301

303

305



MAPLEWOOD LN

COTTAGE HL

ASPEN SQ

SIERRA SPRIN

MAPLEWOOD LN

ASPEN SQ

BARNETT DR

HIGHLAND AVE

R