

*Susan Reeves, Chairperson  
Charity McDaniels, Co Chairperson  
Edith Jackson, Planning Commission Member  
Kenneth Mulkey, Planning Commission Member  
Jack Murray, Planning Commission Member  
Richard Taylor, Planning Commission Member  
Benny Moore, Planning Commission Member  
Todd Day, Town Manager*

**TOWN OF TAZEWELL, VIRGINIA**  
***Planning Commission Meeting***  
Monday, April 4, 2016  
7:00 p.m.  
Town of Tazewell Council Chambers

**Site Inspection at the Old Ramey Ford Lot @ 6:40 P.M.**

❖ **Call to Order by Planning Commission Chairman**

1. Pledge of Allegiance
2. Invocation
3. Approval of Minutes  
[Planning Commission Meeting of March 7 ,2016]
4. Ramey Ford Subdivison ( Ribble )
5. Water St vs. Court St, Mill Rd and Ben Bolt Ave ( Chris)
6. Harry's Lot around the old Shoe Shop (Chris)
7. Special Presentation
8. Adjournment

**Planning Commission Meeting Minutes**  
**March 7, 2016**

**PUBLIC HEARING**

Planning Commission Member Murray called the public hearing to order at 6:45 p.m. The Town of Tazewell held a public hearing for the proposed Comprehensive Plan. Attorney Pyott read the Notice of Public Hearing. Planning Commission Member Murray asked if anyone wished to speak for or against this issue. At this time, no one spoke for or against this reading.

The Tazewell Planning Commission met at 7:00 p.m. in the Town Hall Council Chambers.

**Present:**

Planning Commission Vice Chair Charity McDaniel  
Planning Commission Member Benny Moore  
Planning Commission Member Edith Jackson  
Planning Commission Member Jack Murray  
Planning Commission Member Kenneth Mulkey  
Planning Commission Member Richard Taylor  
Town Manager Todd Day (Non-Voting Member)

**Absent:**

Planning Commission Chair Susan Reeves

Staff present was Town Attorney Brad Pyott; Town Clerk LEEANNE BILLINGS.

**CALL TO ORDER**

Planning Commission Vice-Chair McDaniel called the meeting to order and lead the pledge of allegiance. Then a moment of silence was observed.

**APPROVAL OF MINUTES**

Motion to approve minutes was made by Planning Commission Member Murray, seconded by Planning Commission Member Mulkey to approve the February 1, 2016 meeting minutes. On vote: Planning Commission Member Murray, aye; Planning Commission Member Mulkey aye; Planning Commission Member Taylor, aye; Planning Commission Vice Chair McDaniel, aye; Planning Commission Member Jackson, aye; Planning Commission Member Moore, aye.

**COMPREHENSIVE PLAN VOTE**

Attorney Pyott stated that each member was given a Comprehensive Plan to review. Vice Chair McDaniel read the Comprehensive Plan Resolution. On a roll call vote to approve the Comprehensive Plan, Planning Commission Member Murray, aye; Planning Commission Member Mulkey aye; Planning Commission Member Taylor, aye; Planning Commission Vice

Chair McDaniel, aye; Planning Commission Member Jackson, aye; Planning Commission Member Moore, aye.

### **DEER RUN LANE DISCUSSION**

Manager Day stated that off of Deer Run Lane there is a lot that someone wants to subdivide. Part of the lot is in the road and it is owned by an individual. Attorney Pyott is working on correcting the issue of the lot being in the road and owned by an individual. The particular lot in question is currently land locked. It was intended to be zoned R3 but it currently does not meet those guidelines and we will need to look into that. There is currently no recommendation on how to address this issue however, once we review the situation further a recommendation will be made to the Planning Commission. Attorney Pyott will begin working on a deed of dedication from the land owner for the property that is located in the road. It would then become property of the Town. Then the strip of land will become part of Deer Run Lane. Manager Day spoke to the owner and they said they tried to get this fixed in years past but it was never corrected.

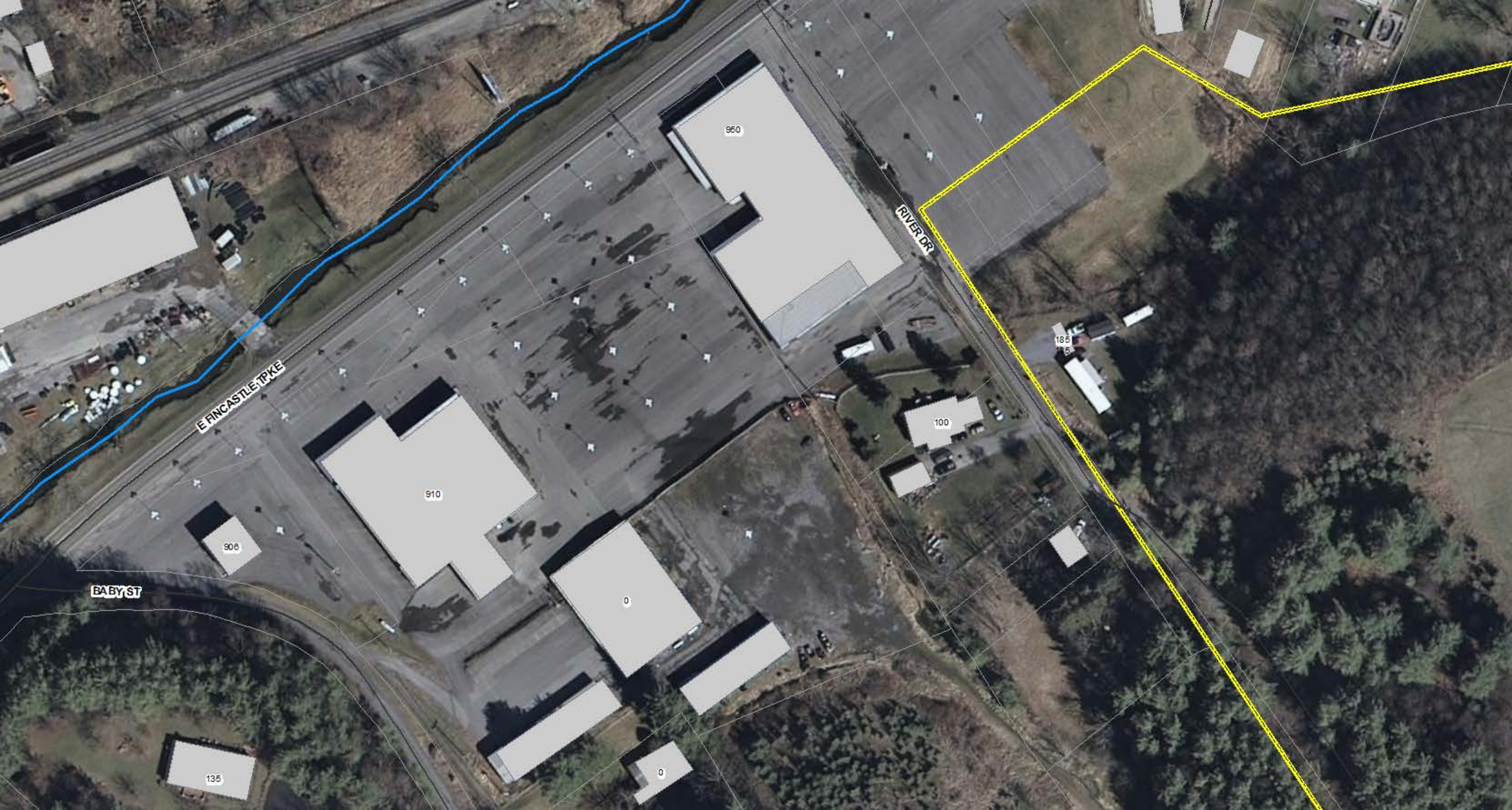
### **BOUNDARY ADJUSTMENT**

Manager Day would like to request a committee of two members to meet more than once a month. There are areas of the Town boundary lines that need to be looked at and possibly reconfigured. The areas can be broken down to sections and concentrated on as such. This is not being done for tax dollar increase. In the 1960's the Town was surveyed. The map that was used has some issues that are not portrayed correctly. The Commissioner of Revenue reads the map and says what is in town and what is out of town. We now have a new updated map with town boundaries. Now some lines show people in town when before it showed out of town and vice versa. This is going to take some time and attention to fix and we have to send it to Richmond if we have any meets and bounds changes.

### **ADOJURNMENT**

With no other discussion coming before the Planning Commission at this time, Vice Chair McDaniel adjourned the meeting at 7:27 p.m.





E FINCASTLE TPKE

RIVER DR

BABY ST

960

910

908

135

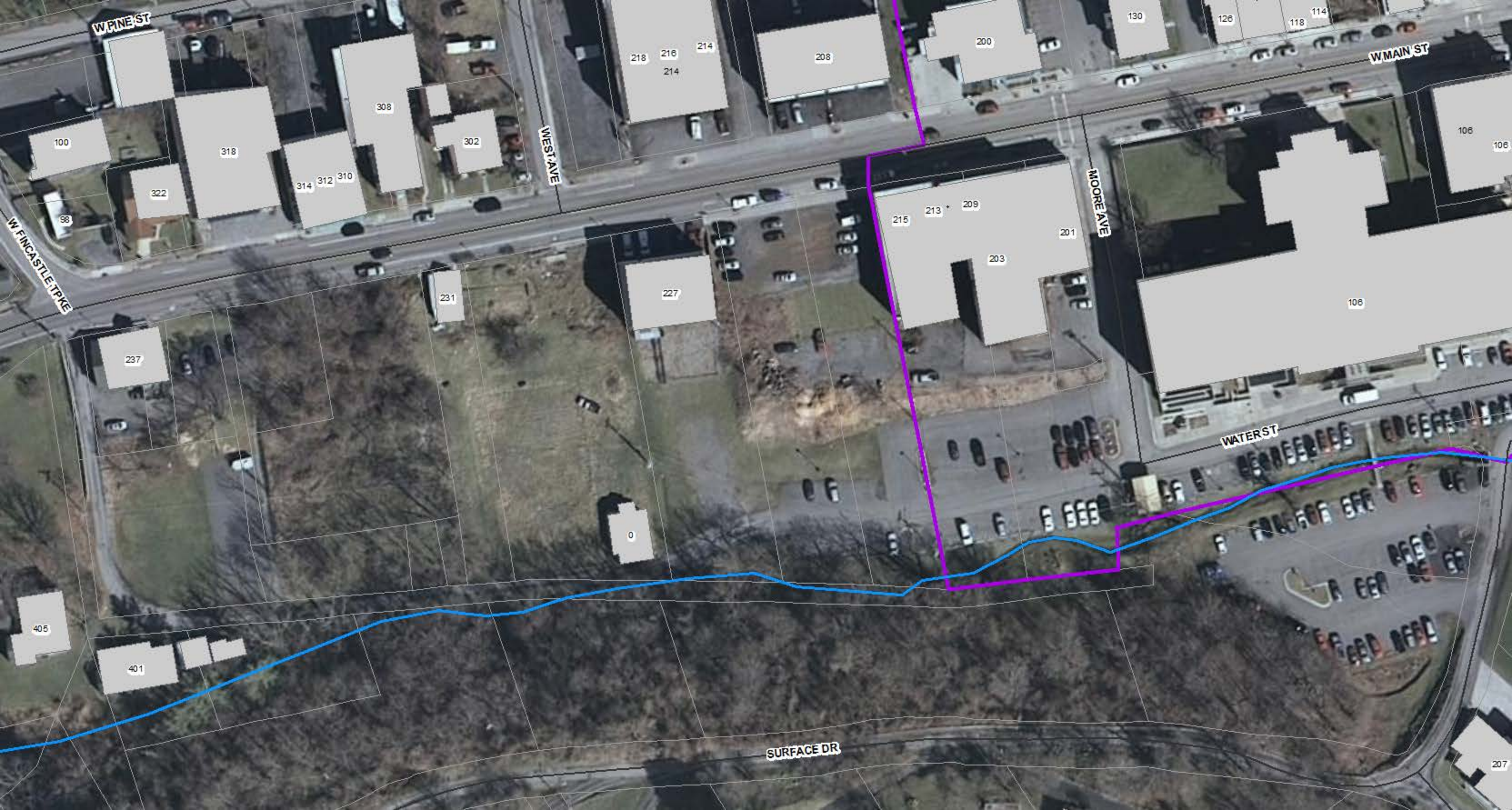
0

0

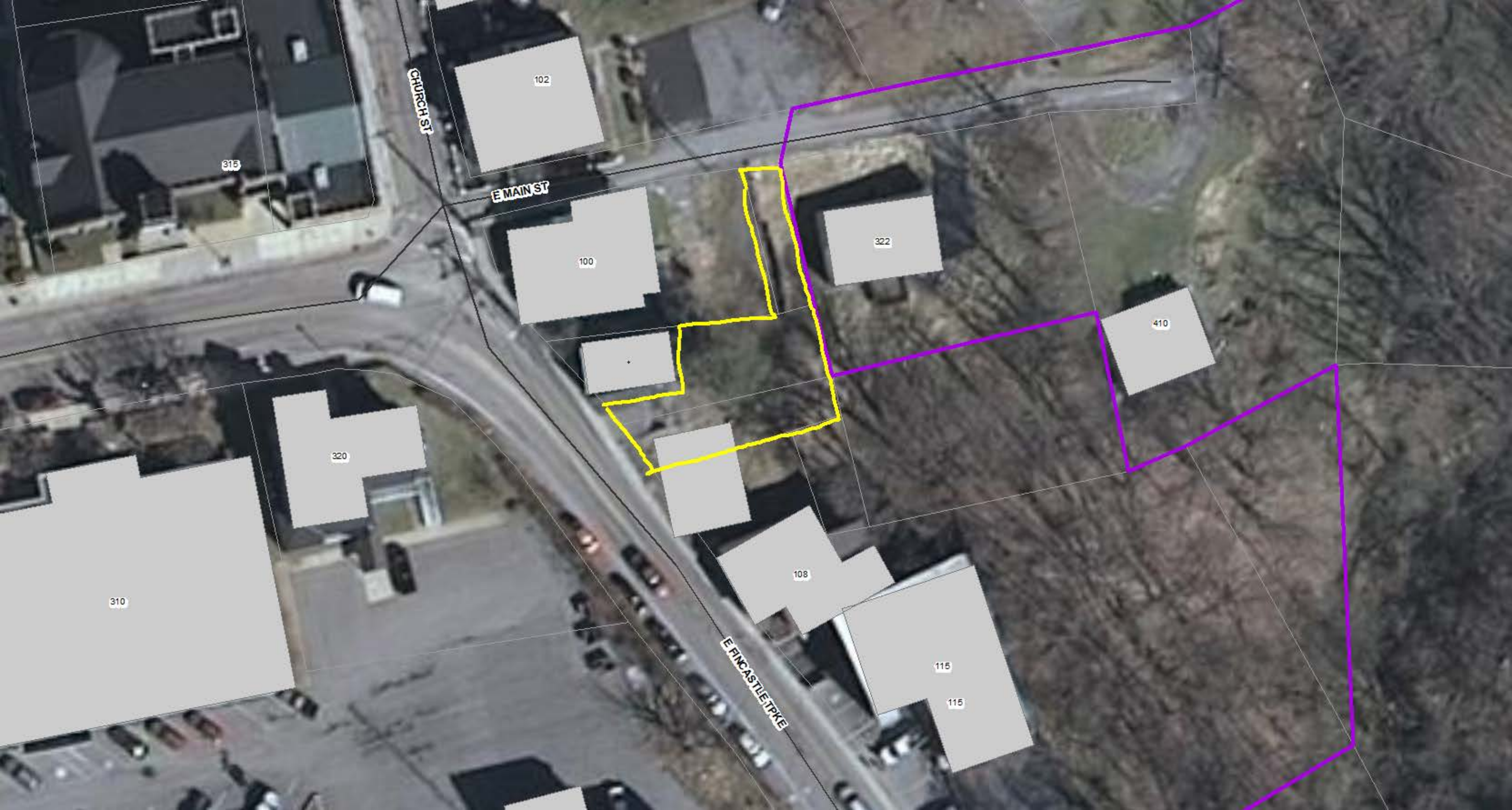
100

185  
15









CHURCH ST

E MAIN ST

E FINCASTLE PKWY

102

100

322

410

320

310

108

115

115

315