



TAZEWELL POLICE
DEPARTMENT



ANNUAL REPORT



Fact Sheet

2012 Population for Town of Tazewell.....	6,000
Square Miles.....	10 Sq. Miles
Town Budget (FY 2012).....	4,703,152.12
Town Police Budget.....	1,012,347.72
Total Employees.....	63
Police.....	16
Non-Sworn Employees.....	1
2012-Total Calls for Service.....	10,076.00

Non-Violent Offenses

Total	512
Burglary.....	101
Larceny.....	400
Motor Vehicle Theft.....	11

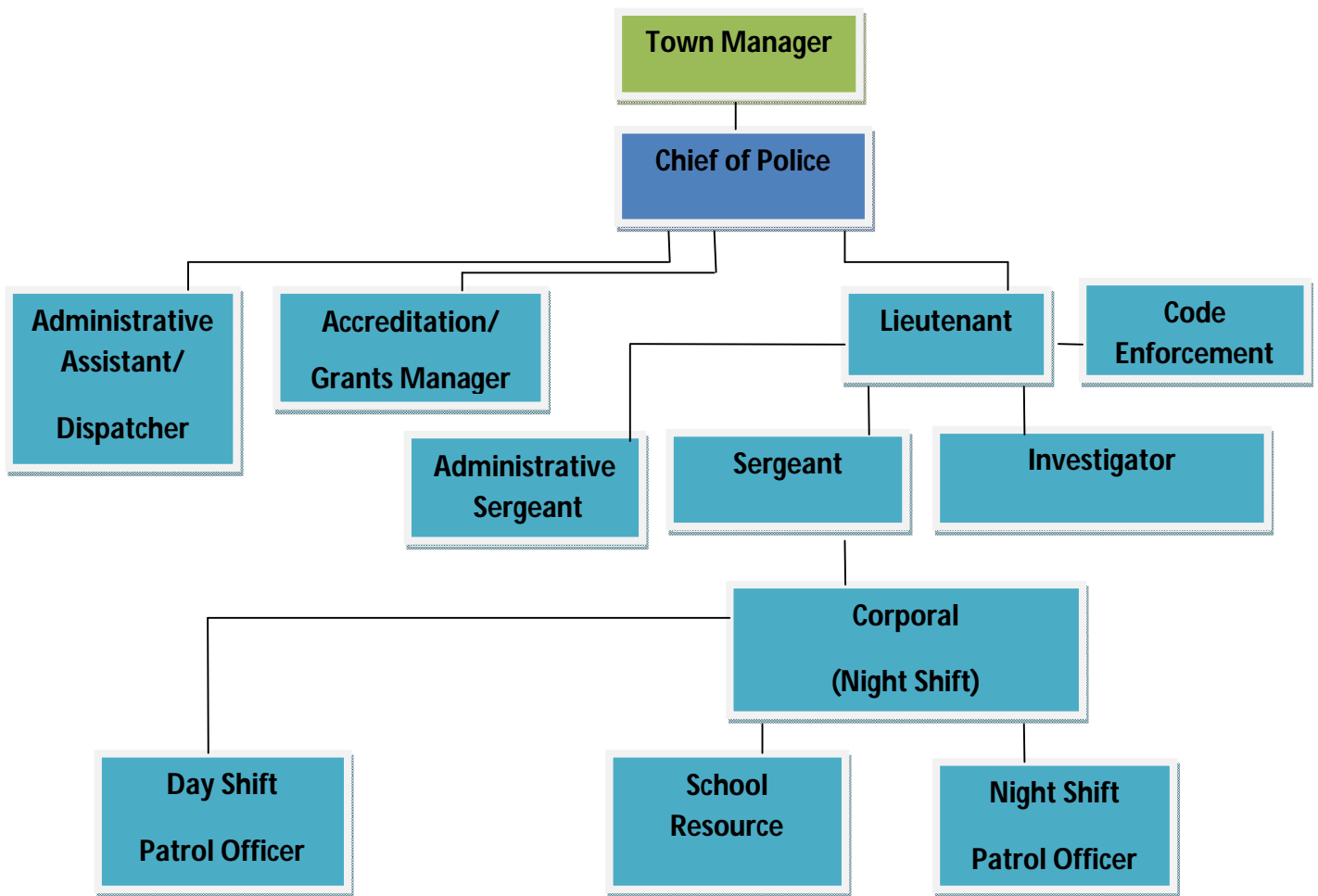
Violent Offenses

Total	40
Murder.....	1
Rape.....	10
Robbery.....	3
Aggravated Assault.....	26

Criminal Arrests.....	986
Driving Under the Influence.....	156



TAZEWELL POLICE DEPARTMENT ORGANIZATIONAL CHART
“CHAIN OF COMMAND”



Revised 04/29/2013



TAZEWELL POLICE DEPARTMENT

Mission Statement

“To protect the life; individual liberty and property of all people within the Town of Tazewell, Virginia”.



VISION STATEMENT

The Vision of The Tazewell Police Department is to provide progressive, professional law enforcement services to the Town of Tazewell recognizing that public safety begins with a strong bond with the community in which we serve.

PHILOSOPHIES & VALUES

The Tazewell Police Department philosophy and values reflect a modern, quality law enforcement concept involving every member of the police department.

The Tazewell Police Departments leadership at all levels reflects the agencies commitment to a strong work ethic, while valuing diversity, promoting effective learning and enhancing and maintaining flexibility.

All members of the Tazewell Police Department will be courteous and professional in enforcing and abiding by the laws of the Town of Tazewell, Commonwealth of Virginia and the Constitution of the United States.



5 YEAR STATISTICAL COMPARISON CHART

Year	Aggravated	Simple	Burglary	Homicide	Counterfeiting /Forgery	Kidnapping /Abduction	Larceny	Forcible Rape	Forcible Sodomy	Sexual Assault with an object	Forcible Fondling	Incest	Statutory	Total
2008	9	35	7	0	22	2	51	3	2	2	7	0	0	140
2009	3	55	18	0	24	4	74	1	1	1	1	0	1	183
2010	6	57	23	1	13	2	106	2	1	0	0	0	0	211
2011	2	54	15	0	15	0	82	2	0	0	1	0	0	171
2012	6	50	38	0	42	1	87	1	0	0	1	0	0	226

SOURCE IBR- Statistical Comparison Chart:

Population

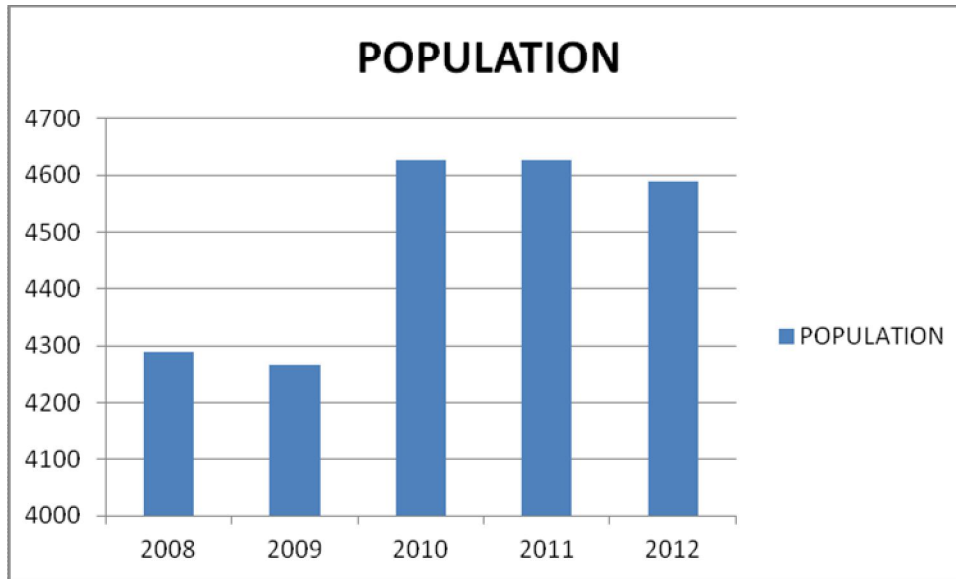
2008-----4,288

2009-----4,267

2010-----4,627

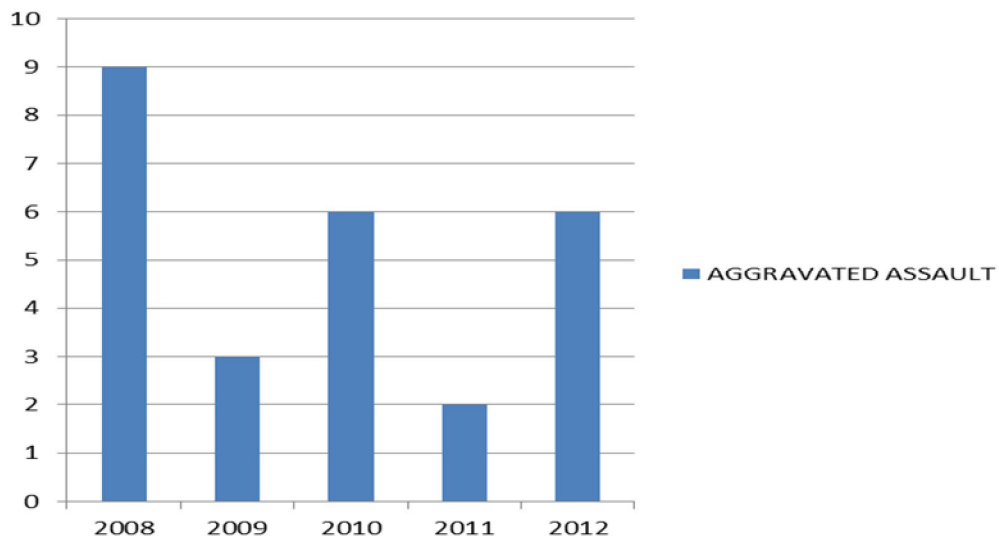
2011-----4,627

2012-----4,589

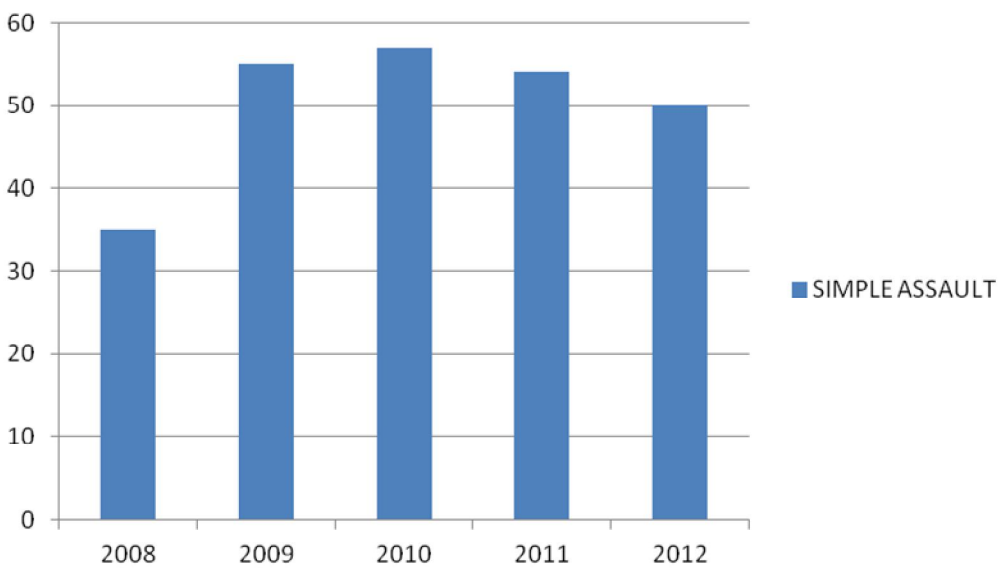


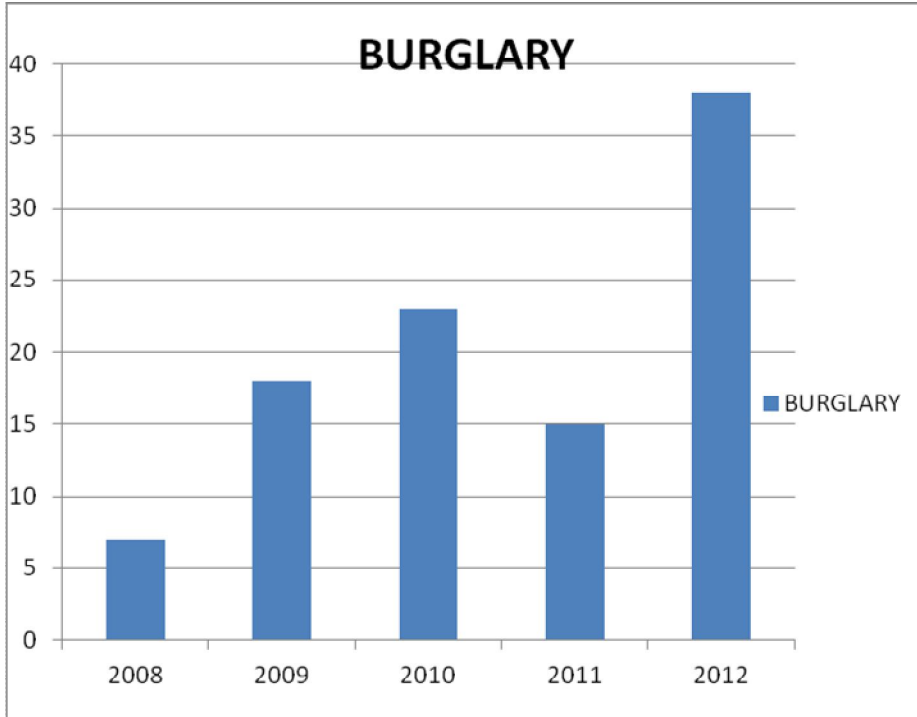


AGGRAVATED ASSAULT



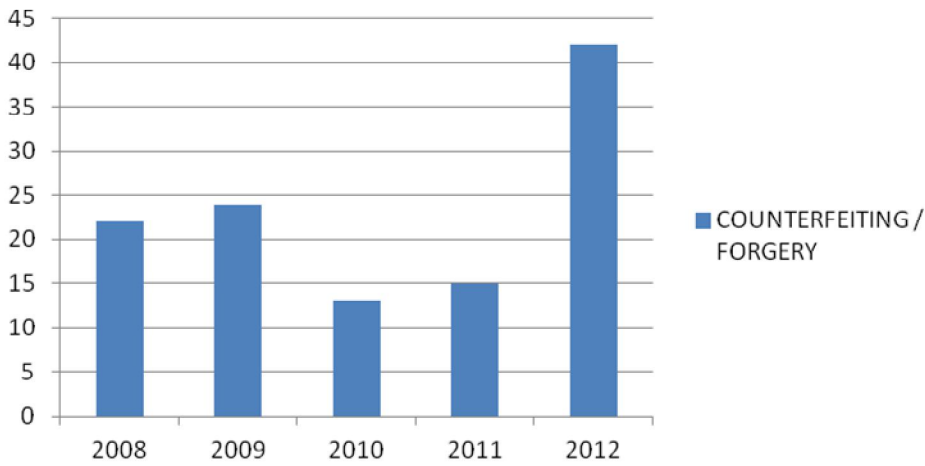
SIMPLE ASSAULT



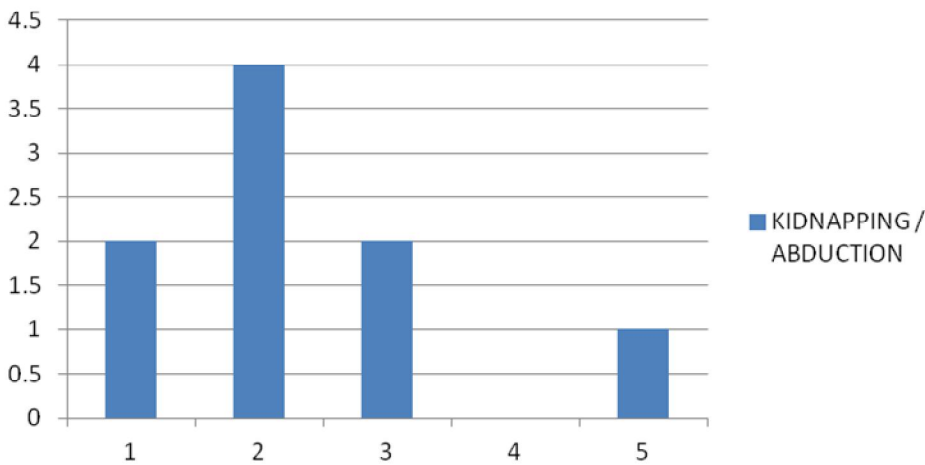


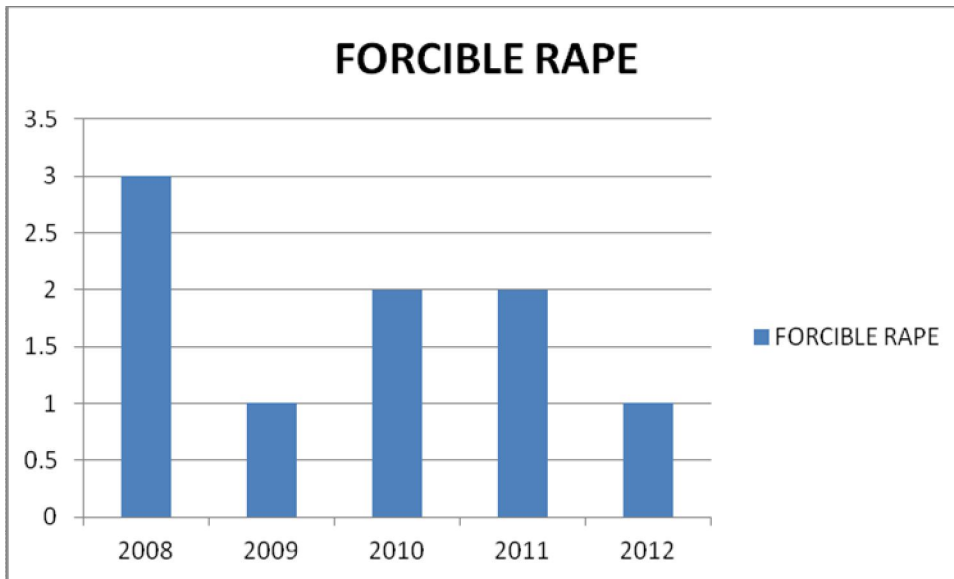
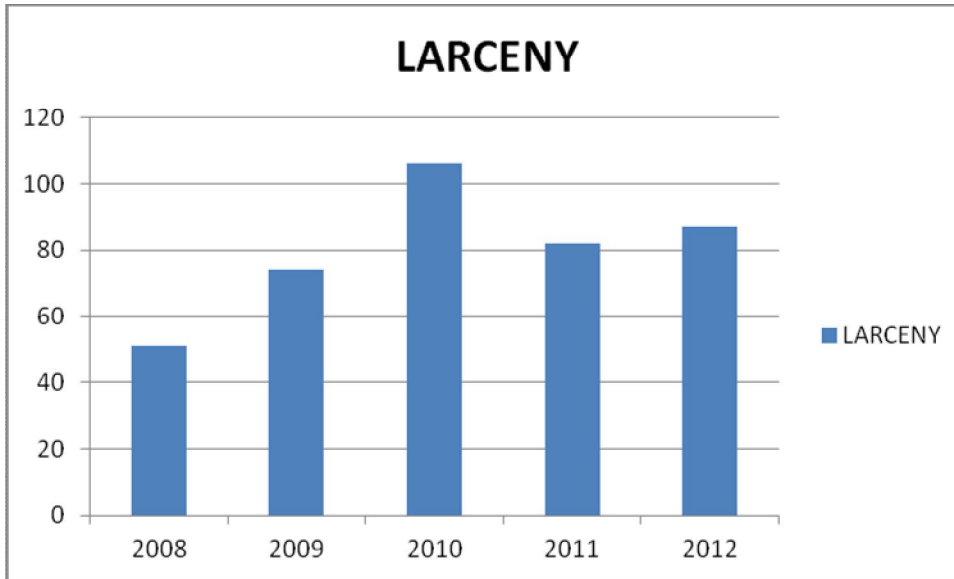


COUNTERFEITING / FORGERY



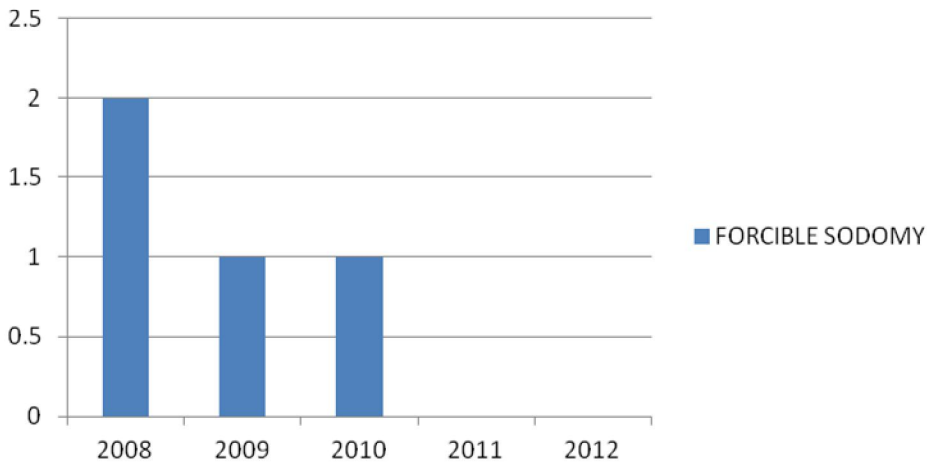
KIDNAPPING / ABDUCTION



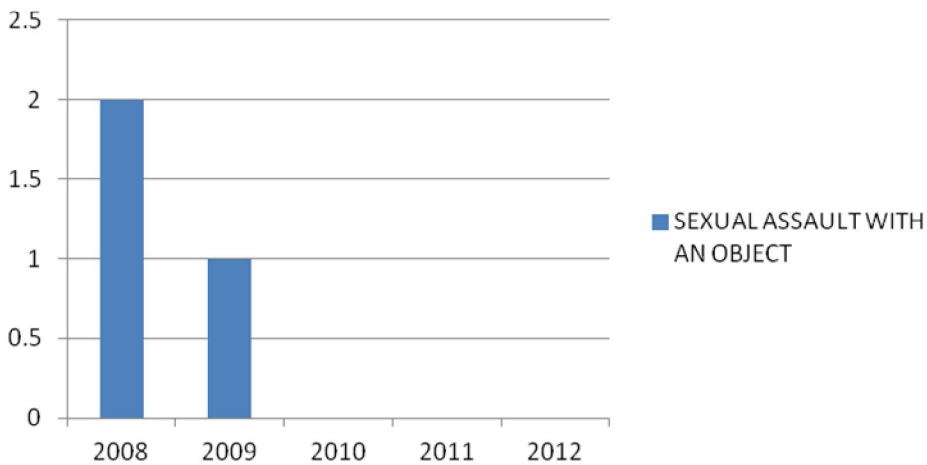




FORCIBLE SODOMY

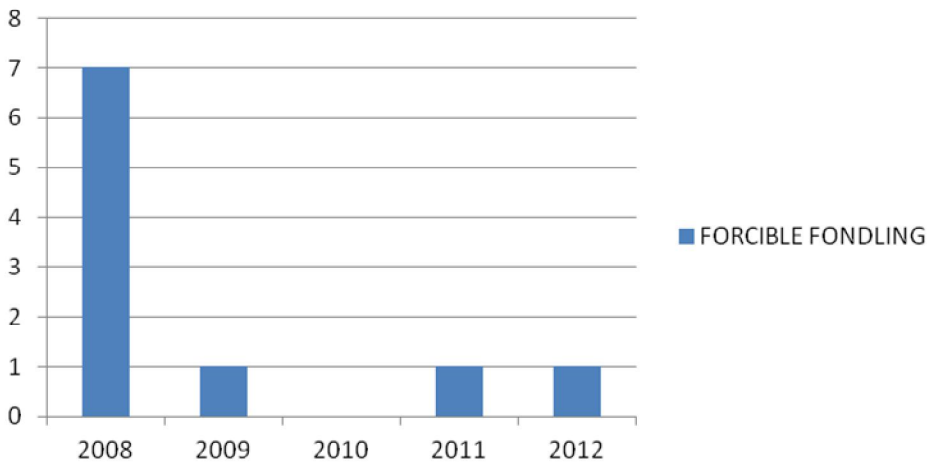


SEXUAL ASSAULT WITH AN OBJECT

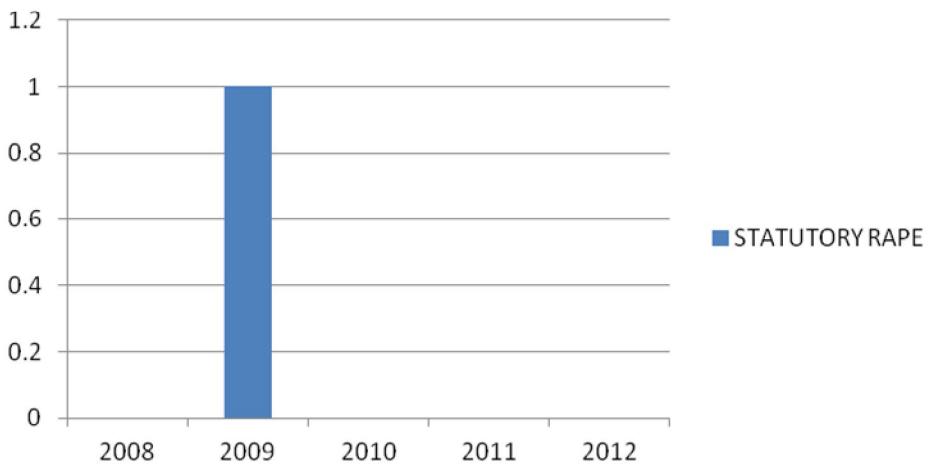




FORCIBLE FONDLING



STATUTORY RAPE





ADMINISTRATION OPERATIONS

Administration Overview

The Tazewell Police Department is a state accredited agency employing fifteen sworn officers and one civilian. The department consists of the Chief of Police. In his chain of command, Lieutenant, Administration Sergeant, Operations Sergeant, Corporal, Investigator, Code Enforcement Officer, two School Resource Officers, Accreditation Manager, Administrative Assistant and five Patrol Officers. The department strives to provide the best service and protection to the citizen's of the town. The mission of the police department is "To protect the life; individual liberty and property of all people within the Town of Tazewell, Virginia".

Personnel Training

The Tazewell Police Department takes great pride in providing all personnel with the best training available. All sworn officers have received basic law enforcement training. The department also has officers trained in specialized areas of law enforcement to provide citizen's with the best protection that can be provided. The police department in 2012 had two officers graduate from basic law enforcement training at the Southwest Virginia Criminal Justice Training Academy. The department had 33.25 hours of legal and cultural diversity training, 325 hours of career development training with 256 hours of that being specialized throughout the year.

Range Training

All officers are required to undergo annual qualification with all weapons carried on patrol. The department also qualifies officers with their off-duty weapon that is approved by the Chief of Police. Qualifications are mandatory within the department as well as state mandated. All officers are encouraged to practice and maintain strong skills in handling their weapons. The Use of Force policy is reviewed and trained on annually as well as all less than lethal weapons, such as; baton and o.c. spray. Each officer received at least 8 hours of range training. The police department has and maintains its own firing range.

Code Enforcement

The Code Enforcement Officer is responsible for enforcing Town Code. This officer handles animal complaints, domestic and wild. The department handled several code violations in 2012. In 2012, this officer responded to 3cat calls, 65 dog calls, 5 farm animal calls, 20 wild animal calls, and completed 9 animal welfare checks. In 2012, the officer received or responded to 100 code related complaints.

Evidence Handling and Control

The Tazewell Police Department collects and handles evidence and property with extreme care and consideration. The department follows and abides by Virginia State Code in the collection, preservation, and destruction/ return of all property. The Evidence and Property Room is overseen, supervised, and maintained by the Lieutenant and the Corporal.

Accreditation

The Tazewell Police Department has been a state Accredited Agency since 2006 when it became the smallest agency in the Commonwealth of Virginia to attain this status. The department is working on its third accreditation. We will be assessed in 2014 by VLEPSC assessors to receive our third certificate of accreditation. The department must comply with 187 standards set forth by the commission to maintain accredited status. This is a continual process that each member of the department is responsible for. The status proves that we are in compliance with all applicable standards and that we are a professional agency providing the best service possible to the citizen's of Tazewell. As stated in the VELEPSC program manual "Accreditation is the ongoing process whereby agencies evaluate police and procedure against established criteria, and have compliance with that criteria verified by an independent and authoritative body. VELEPSC accreditation demonstrates The Tazewell Police Department's commitment to utilizing the best operational practices and maintaining strict compliance with performance standards.

Inspections

The Tazewell Police Department conducts several inspections at different times throughout the year. Every employee is inspected and evaluated in appearance and performance. The vehicles and equipment are inspected for operational readiness as well as appearance. The police department and its members take pride in their appearance and professionalism. All aspects of the officer and their equipment are needed to be of the highest quality. The efficiency of our equipment plays a large role in our ability to perform our duties.

Special Operations

Our ERT (Emergency Response) Team was established in 2005. Members from the team were sent to special training to include; Basic Swat School and Active Shooter. The team also conducted in-house training at all schools to practice for an active shooter incident. Training was also conducted with a firearm simulator and live fire training at our firing range. The team completed approximately 60 hours of in-house training throughout the year. In 2012, we successfully placed an ERT vehicle in our fleet. In 2012, the team responded to 5 incidents to include; malicious wounding search warrant, larceny search warrant, stolen property search warrant, theft of motor vehicle/theft from motor vehicles search warrant, and a homicidal subject.

Warrants

During 2012 The Tazewell Police Department had several officers sworn in to serve town warrants outside the town limits. This reduced the backlog of warrants needing to be served and increased cases being closed.

Administrative / Dispatch

The administrative sergeant position was created to ensure maintenance of reporting equipment for compliance provides guidance and training to staff, maintains budget analysis and equipment ordering and maintenance.

Our administrative assistant handled over 2000 calls for service. In addition she is responsible for the overall safety requirements in the town as well as maintaining the IBR files and coordinating our community service activities.



INVESTIGATIVE OPERATIONS

The Criminal Investigation Division is comprised of one full-time investigator and two part-time drug task force investigators. The investigative division is overseen and supervised by the Lieutenant. The full-time investigator handles most felonies and some misdemeanors reported to the police department. The investigator also works closely with surrounding jurisdictions and assists those jurisdictions when called upon to do so. The investigator presents all indictments to the Grand Jury for the department.

In 2012, the Tazewell Police Department had 634 IBR reported incidents. At the end of the year, 500 of those reported incidents were closed leaving 134 open. These totals left the police department with a 78.9% clearance rate for the year. The current investigator worked a total of 134 cases, clearing 121 leaving 13 open for 2012. These totals show the investigator with a 90.2% clearance rate for the year.

The police department worked cases involving; assault and battery, malicious wounding, abduction, sexual assault, child abuse/neglect/endangerment, grand larceny, petit larceny, distribution, possession, contributing, arson, indecent liberties with children, indecent exposure, fraud, forgery and uttering, breaking and entering, perjury, identity theft, escape from jail, suicides, overdoses and unattended deaths.

The police department was able to put a stop to ring of individuals who were breaking into residential homes and stealing property from within in June 2012. A search warrant was obtained for a residence on Blacksburg Street and property was recovered from 14 residential breaking and entering's in the town and 4 residential breaking and entering's in the county. Four individuals were indicted on approximately 60 counts each. The police department as a whole was extremely pleased that we were able to return some of the valuable heirlooms that belonged to the families of our town.

On August 11, 2012, a male inmate escaped from the custody of the Tazewell Regional Jail. With the assistance of surrounding jurisdictions, we were able to apprehend the male inmate and

had him back in custody within almost 24 hours of his escape. This demonstrated an extreme effort from all departments involved to cooperate and work together.

The police department has worked very diligently in 2012 to bring closure to many victims and to provide service to many individuals as well. It can be seen in how many reported incidents that this small town received and how many were successfully closed. We look forward to serving this great town and its citizens for many years to come.



PATROL OPERATIONS

Patrol Operations is comprised of two 12 hour shifts, day and night. Officers are responsible for providing 24 hours service to the Town of Tazewell providing police services to approximately 6,000 residents. Patrol duties include but are not limited to the following: answering calls for service, enforcing all Federal, State, and local ordinances and laws, enforcing all traffic laws, investigations, drug interdictions, accident investigations, and safeguarding the lives, property, and public peace that the citizens and visitors of the town are entitled too.

The police department answers an average of 10,000 calls for service per year. When officers are not answering calls for service they are patrolling streets and neighborhoods. Patrolling each are of town is a deterrent and an extremely important duty. Night Shift Patrol also conducts “Business Checks” by checking a minimum of 20 businesses a night and leaving business cards for business owners with the date and time of the check. Several times a year the Patrol Division operates special assignments that include road checks, seat belt enforcement, and traffic control for local events, security for events, and security for local athletic games.

The rank structure of the patrol division is operated by 2 supervisors, a day shift Sergeant and night shift Corporal. These supervisors oversee 7 patrol officers which include two School Resource Officers. Patrol Officers have a large amount of public interaction. Patrol is a very important aspect of a police department and combined with all other divisions bring the safety and security that the citizens of the town deserve and desire.

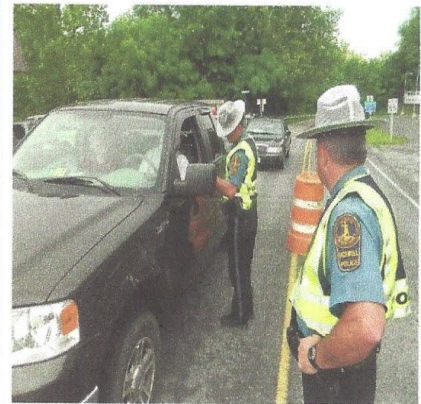


SPECIAL ENFORCEMENT

Throughout 2012, the Special Enforcement Unit participated in various Click it or Ticket operations, conducted sixteen checkpoints and four saturated patrols, and assisted Patrol Operations with numerous other initiatives. The patrol units handled 181 funeral escorts with all being led by a Patrol Vehicle. Special Enforcement Unit personnel issued 487 Citations were issued Citations for speeding 469 for other traffic violations, 11 arrests for other DUI / DUID violations, and 7 Citations for seat belt Violation and 5 for child for Child restraint violation, Additionally the unit wrote 128 parking tickets, made 113 felony arrests, and 213 misdemeanor arrests.

Partnering with the Richmond DMV Highway Safety Office and the Tazewell Police Department hosted the 2012 May Click It or Ticket kick-off event. Several agencies in southwest Virginia attended, emphasizing the country-wide "Click It or Ticket" mobilization to save lives by strongly enforcing occupant protection laws, to include both belt and child restraint violations.

The Tazewell Police Department partnered with the local jurisdictions to host the annual 2012 Checkpoint Strike and driving. This ten year old campaign is a statewide law enforcement and public awareness effort to detect and impaired drivers in Virginia, focusing on the use of sobriety checkpoints to prevent drunk driving.



The Tazewell Police Department partnered with Tazewell High School, Tazewell Fire, Virginia State Police, and many other organizations to promote safe driving for Tazewell teens. The one day event included live demonstrations related to distracted driving, impaired driving, and blind spot identification. Featured courses were the Distracted Driving Golf Cart Course, Impaired Driving Simulator, DUI Fatal Vision "Walk the Line," and Demonstration. Over 600 high school students from Tazewell attended.





Occupational Safety and Training

Training employees about workplace safety requirements is time and money well spent. An effective occupational safety and health training program can result in fewer injuries and illnesses, better morale and lower workers' compensation insurance premiums, among other benefits. There's an unlimited upside to participating in safety training.

Custom tailored safety training programs will be created based on the Town of Tazewell needs. Tazewell has 2 safety trainers who will travel spontaneously thru town to make safety checks of Town employees to see if they are in compliance with the safety regulations of the Town of Tazewell. The Town also holds a safety meeting every 2 month with all of the Department heads to let them know of any violation and of any ideas to prevent future problems or needs.

General Topics

- **Blood borne Pathogens** - Exposure control plans, how exposure occurs, universal precautions, engineering and work practice controls, PPE, housekeeping, regulated waste, Hepatitis B vaccination requirements, what to do if exposure has occurred, biohazard warning labels, training requirements, and medical recordkeeping requirements.
- **Confined Space Safety** - Categories of confined spaces, hazards, hazardous atmospheres (flammable, carbon monoxide, carbon dioxide, oxygen deprivation), welding, cutting, and heating, ventilation, properties of gases, and rescue.
- **Construction Crane** - Hazards, parts of a crane, types of cranes, pre-use planning, competent person, load capacity, speed, lifting principles, improper loads, power lines, hand signals, swing radius, operator visibility, suspended loads, boom angle (USE), supporting surface, and annual inspections.
- **Fall Arrest Safety** - Fall prevention vs. fall protection, hazard recognition, types and components of fall protection, uses for personal fall arrest, the ABCs of a personal fall arrest system, equipment inspection, and rescue plans.

- **Fire Safety** - Emergency action plans, basic requirements of exit routes, fire prevention plans, fire hazards, fire extinguishers (including types of extinguishers, classifications, fire tetrahedron, ratings, maintenance & inspection, training & education requirements, PASS method), and fire response.
- **Hazard Communication** - Chemical labeling, material safety data sheets (MSDS), and written program requirements.
- **Hearing Safety** - Hearing Safety- Area noise measurements, action level, engineering controls, administrative controls, PPE, types of PPE, and proper use.
- **Ladder Safety** - Types of ladders, ladder construction, proper ladder procedures, improper use, climbing safety, ladder hazards, using ladders as working platform, ladder inspections, unsafe ladders, and proper ladder storage.
- **Power Hand Tool Safety** - Hazards, good practices, guarding, inspections, and General precautions, types of power tools, guarding requirements, and basic rules for power tool safety.
- **Powered Industrial Trucks** - Operating hazards, stability triangle, pre-operation inspections, operation, mounting and dismounting, loading/unloading, parking, and what to do if forklift tips over
- **Respiratory** - Training covers: hazards, types of respirators, limitations, fit-tests & seal-checks, inspection & care of respirators, facial hair.
- **Scaffold Safety** - Hazards, types of scaffolds, elements of safe construction, proper use, inspections, fall protection, guardrails, fall arrest systems, requirements, falling object protection, overhead power lines, scaffold support examples, platform construction, and training requirements.
- **Trench Safety** - Hazards, sloping and benching, trench boxes, soil and classification types, signs of soil distress, and hazardous atmospheres.
- **Walking Working Surfaces** - Slips, trips, and falls; housekeeping; aisles and passageways, covers and guardrails, floor loading protection, floor openings, guarding floor openings, wall openings, open sided floors and platforms, stairways, ladders, and scaffolding.